

**CITY OF LA VISTA
MAYOR AND CITY COUNCIL REPORT
APRIL 5, 2011 AGENDA**

Subject:	Type:	Submitted By:
AUTHORIZATION TO PURCHASE 4 X 4 CHEVY TAHOE	◆ RESOLUTION ORDINANCE RECEIVE/FILE	JOE SOUCIE PUBLIC WORKS DIRECTOR

SYNOPSIS

A resolution has been prepared authorizing the purchase of one (1) 2011 4 x 4 Chevrolet Tahoe from Sid Dillon Chevrolet Buick, Wahoo, Nebraska, for the Public Works Department in an amount not to exceed \$31,168.00.

FISCAL IMPACT

The FY 2010/11 General Fund and Sewer Fund Budgets include \$30,000 in funding for the proposed purchase. Overrun will be covered by savings in other line items within the General and Sewer Funds.

RECOMMENDATION

Approval

BACKGROUND

The new Tahoe will be used primarily by the City Engineer/Assistant Public Works Director. The vehicle will be available to other Departments when it is necessary to transport multiple employees to training or meetings. The vehicle is being purchased off the State of Nebraska Contract – 12889 OC.

RESOLUTION NO. _____

A RESOLUTION OF THE MAYOR AND CITY COUNCIL OF THE CITY OF LA VISTA, NEBRASKA, AUTHORIZING THE PURCHASE OF ONE (1) 2011 4 X 4 CHEVROLET TAHOE FROM SID DILLON CHEVROLET BUICK, WAHOO, NEBRASKA, IN AN AMOUNT NOT TO EXCEED \$31,168.00.

WHEREAS, the City Council of the City of La Vista has determined that the purchase of said tahoe is necessary; and

WHEREAS, the FY 2010/11 General Fund and Sewer Fund Budgets provide funding for said purchase; and

WHEREAS, the purchase will be off the State of Nebraska Contract – 12889 OC; and

WHEREAS, Subsection (C) (9) of Section 31.23 of the La Vista Municipal Code requires that the City Administrator secure council approval prior to authorizing any purchases over \$5,000.

NOW, THEREFORE BE IT RESOLVED, that the Mayor and City Council of the City of La Vista, due hereby authorize the purchase of a 2011 4 X 4 Chevrolet Tahoe from Sid Dillon Chevrolet Buick, Wahoo, Nebraska, in an amount not to exceed \$31,168.00.

PASSED AND APPROVED THIS 5TH DAY OF APRIL, 2011

CITY OF LA VISTA

Douglas Kindig, Mayor

ATTEST:

Pamela A. Buethe, CMC
City Clerk

Prepared For:

City of Lavista
9900 Portal Rd
LaVista, NE 68128
Phone: (402) 331-8927
Fax: (402) 331-1051
Email: jkottmann@cityoflavista.org

Prepared By:

Ron Fullerton
Sid Dillon Chevrolet Buick
257 West A Street
Wahoo, NE 68066
Phone: (402) 540-7578
Fax: (402) 443-3982
Email: rfullerton@siddillon.com

2011 Chevrolet Tahoe

CK10706 4WD 4dr 1500 Commercial

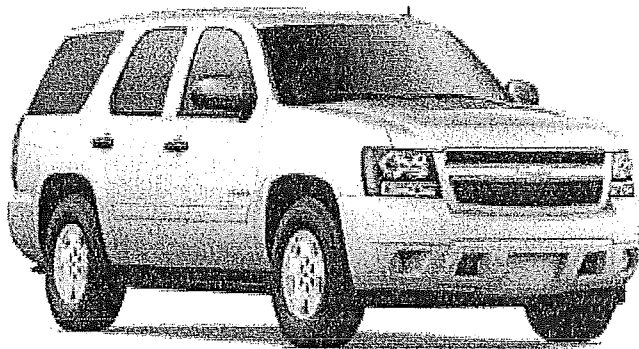
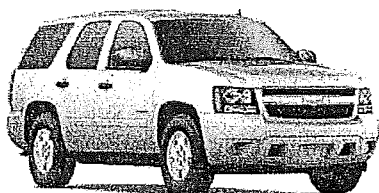


Photo may not represent exact vehicle or selected equipment.

Prepared For:
 City of Lavista
 9900 Portal Rd
 LaVista, NE 68128
 Phone: (402) 331-8927
 Fax: (402) 331-1051
 Email: jkottmann@cityoflavista.org



Prepared By:
 Ron Fullerton
 Sid Dillon Chevrolet Buick
 257 West A Street
 Wahoo, NE 68066
 Phone: (402) 540-7578
 Fax: (402) 443-3982
 Email: rfullerton@siddillon.com

2011 Fleet/Non-Retail Chevrolet Tahoe 4WD 4dr 1500 Commercial CK1070

SELECTED MODEL & OPTIONS

SELECTED MODEL - 2011 Fleet/Non-Retail CK10706 4WD 4dr 1500 Commercial

<u>Code</u>	<u>Description</u>	<u>MSRP</u>
CK10706	2011 Chevrolet Tahoe 4WD 4dr 1500 Commercial	\$41,630.00

SELECTED VEHICLE COLORS - 2011 Fleet/Non-Retail CK10706 4WD 4dr 1500 Commercial

<u>Code</u>	<u>Description</u>
-	Interior: No color has been selected.
-	Exterior 1: No color has been selected.
-	Exterior 2: No color has been selected.

SELECTED OPTIONS - 2011 Fleet/Non-Retail CK10706 4WD 4dr 1500 Commercial

CATEGORY

<u>Code</u>	<u>Description</u>	<u>MSRP</u>
SUSPENSION PKG		
ZW7	SUSPENSION PACKAGE, PREMIUM SMOOTH RIDE (STD)	\$0.00
EMISSIONS		
FE9	EMISSIONS, FEDERAL REQUIREMENTS	\$0.00
ENGINE		
LMG	ENGINE, VORTEC 5.3L V8 SFI FLEXFUEL with Active Fuel Management, capable of running on unleaded or up to 85% ethanol (with gas - 320 hp [238.6 kW] @ 5400 rpm, 335 lb-ft of torque [452.2 N-m] @ 4000 rpm, with E85 ethanol - 326 hp [243.1 kW] @ 5300 rpm, 348 lb-ft of torque [469.8 N-m] @ 4400 rpm), iron block (STD)	\$0.00
TRANSMISSION		
MYC	TRANSMISSION, 6-SPEED AUTOMATIC, ELECTRONICALLY CONTROLLED with overdrive and tow/haul mode (STD)	\$0.00
AXLE		
GU4	REAR AXLE, 3.08 RATIO (Not available with (K5L) Trailering Package.)	\$0.00

Report content is based on current data version referenced. Any performance-related calculations are offered solely as guidelines. Actual unit performance will depend on your operating conditions.

GM AutoBook, Data Version: 170.3, Data updated 3/2/2011 1:52:00 PM

©Copyright 1986-2005 Chrome Systems Corporation. All rights reserved.

Customer File:

March 08, 2011 6:15:55 PM

Page 2

Prepared For:
City of Lavista
9900 Portal Rd
LaVista, NE 68128
Phone: (402) 331-8927
Fax: (402) 331-1051
Email: jkottmann@cityoflavista.org



Prepared By:
Ron Fullerton
Sid Dillon Chevrolet Buick
257 West A Street
Wahoo, NE 68066
Phone: (402) 540-7578
Fax: (402) 443-3982
Email: rfullerton@siddillon.com

2011 Fleet/Non-Retail Chevrolet Tahoe 4WD 4dr 1500 Commercial CK1070

SELECTED MODEL & OPTIONS

SELECTED OPTIONS - 2011 Fleet/Non-Retail CK10706 4WD 4dr 1500 Commercial

CATEGORY

<u>Code</u>	<u>Description</u>	<u>MSRP</u>
PREFERRED EQUIPMENT GROUP		
1FL	COMMERCIAL PREFERRED EQUIPMENT GROUP Includes Standard Equipment	-\$1,295.00
WHEEL TYPE		
NX7	WHEELS, 4 - 17" X 7" (43.2 CM X 17.8 CM) STEEL	\$0.00
TIRES		
QGI	TIRES, P265/70R17 ALL-SEASON, BLACKWALL (STD)	\$0.00
PAINT SCHEME		
ZY1	SOLID PAINT	\$0.00
PAINT		
50U	SUMMIT WHITE	\$0.00
SEAT TYPE		
AZ3	SEATS, FRONT 40/20/40 SPLIT-BENCH, 3-PASSENGER, DRIVER AND FRONT PASSENGER MANUAL RECLINING, CENTER FOLD-DOWN ARMREST with storage, lockable storage compartments in seat cushion (includes auxiliary power outlet), adjustable outboard head restraints and storage pockets (STD) (With vinyl seats also includes (AM1) driver manual lumbar control. With vinyl seats requires (19V) Ebony vinyl and (BG9) Black rubberized-vinyl floor covering)	\$0.00
SEAT TRIM		
19C	EBONY, PREMIUM CLOTH SEAT TRIM	\$0.00
RADIO		
US8	AUDIO SYSTEM, AM/FM STEREO WITH MP3 COMPATIBLE CD PLAYER seek-and-scan, digital clock, auto-tone control, Radio Data System (RDS), speed-compensated volume, TheftLock and auxiliary audio input jack (STD)	\$0.00
ADDITIONAL EQUIPMENT		
G80	DIFFERENTIAL, HEAVY-DUTY LOCKING REAR	\$295.00
G63	LUGGAGE RACK, DELETE	-\$25.00

Report content is based on current data version referenced. Any performance-related calculations are offered solely as guidelines. Actual unit performance will depend on your operating conditions.

GM AutoBook, Data Version: 170.3, Data updated 3/2/2011 1:52:00 PM

©Copyright 1986-2005 Chrome Systems Corporation. All rights reserved.

Customer File:

March 08, 2011 6:15:55 PM

Page 3

Prepared For:
City of Lavista
9900 Portal Rd
LaVista, NE 68128
Phone: (402) 331-8927
Fax: (402) 331-1051
Email: jkottmann@cityoflavista.org



Prepared By:
Ron Fullerton
Sid Dillon Chevrolet Buick
257 West A Street
Wahoo, NE 68066
Phone: (402) 540-7578
Fax: (402) 443-3982
Email: rfullerton@siddillon.com

2011 Fleet/Non-Retail Chevrolet Tahoe 4WD 4dr 1500 Commercial CK1070

SELECTED MODEL & OPTIONS

SELECTED OPTIONS - 2011 Fleet/Non-Retail CK10706 4WD 4dr 1500 Commercial

CATEGORY

<u>Code</u>	<u>Description</u>	<u>MSRP</u>
ADDITIONAL EQUIPMENT		
ATD	SEAT DELETE, THIRD ROW PASSENGER (Requires a fleet or government order type.)	-\$400.00
B30	FLOOR COVERING, COLOR-KEYED CARPETING (Includes (B58) color-keyed floor mats. Not available with (19V) Ebony vinyl trim.)	\$190.00
B58	FLOOR MATS, COLOR-KEYED CARPETED FIRST AND SECOND ROW, REMOVABLE (Included and only available with (B30) color-keyed carpeting.)	INC
UE0	ONSTAR, DELETE	-\$85.00
OPTIONS TOTAL		-\$1,320.00

Report content is based on current data version referenced. Any performance-related calculations are offered solely as guidelines. Actual unit performance will depend on your operating conditions.

GM AutoBook, Data Version: 170.3, Data updated 3/2/2011 1:52:00 PM
©Copyright 1986-2005 Chrome Systems Corporation. All rights reserved.

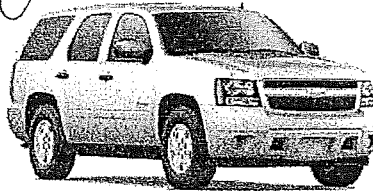
Customer File:

March 08, 2011 6:15:55 PM

Page 4

Prepared For:
City of Lavista
9900 Portal Rd
LaVista, NE 68128
Phone: (402) 331-8927
Fax: (402) 331-1051
Email: jkottmann@cityoflavi
sta.org

Thanks!
Ron Fullerton



Prepared By:
Ron Fullerton
Sid Dillon Chevrolet Buick
257 West A Street
Wahoo, NE 68066
Phone: (402) 540-7578
Fax: (402) 443-3982
Email: rfullerton@siddillon.com

2011 Fleet/Non-Retail Chevrolet Tahoe 4WD 4dr 1500 Commercial CK1070

PRICING SUMMARY

PRICING SUMMARY - 2011 Fleet/Non-Retail CK10706 4WD 4dr 1500 Commercial

	MSRP
Base Price	\$41,630.00
Total Options:	-\$1,320.00
Vehicle Subtotal	\$40,310.00
Advert/Adjustments	\$0.00
Destination Charge	\$950.00
GRAND TOTAL	\$41,260.00

2888-0C = 3,223⁰⁰
seat delete = <240⁰⁰>
Keyless = 185⁰⁰
3,168⁰⁰

Strobes to be added to Price

Conventional Strobe tubes in
Front & Back - no power supply
no switch

— \$550⁰⁰

Conventional Strobe tubes in
Front & Back with power supply
& switch

— 710⁰⁰

LED Strobe system with
switch

— 850⁰⁰

Deduct 50⁰⁰ for
us to remove
the floor mats

Or Keep the
price the same
& we will
exchange the
factory mats
for heavy
rubber mats

Report content is based on current data version referenced. Any performance-related calculations are offered solely as guidelines. Actual unit performance will depend on your operating conditions.

GM AutoBook, Data Version: 170.3, Data updated 3/2/2011 1:52:00 PM

©Copyright 1986-2005 Chrome Systems Corporation. All rights reserved.

Customer File:

March 08, 2011 6:15:55 PM

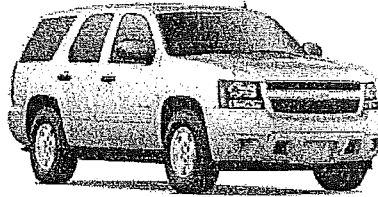
Page 5

Prepared For:

City of Lavista
 9900 Portal Rd
 LaVista, NE 68128
 Phone: (402) 331-8927
 Fax: (402) 331-1051
 Email: jkottmann@cityoflavista.org

Prepared By:

Ron Fullerton
 Sid Dillon Chevrolet Buick
 257 West A Street
 Wahoo, NE 68066
 Phone: (402) 540-7578
 Fax: (402) 443-3982
 Email: rfullerton@siddillon.com



2011 Fleet/Non-Retail Chevrolet Tahoe 4WD 4dr 1500 Commercial CK1070

STANDARD EQUIPMENT

STANDARD EQUIPMENT - 2011 Fleet/Non-Retail CK10706 4WD 4dr 1500 Commercial

ENTERTAINMENT

- Audio system, AM/FM stereo with MP3 compatible CD player seek-and-scan, digital clock, auto-tone control, Radio Data System (RDS), speed-compensated volume, TheftLock and auxiliary audio input jack
- Audio system feature, 6-speaker system (With (PPV) Identifier for Police vehicle, includes 8-speaker system) (With (5W4) Identifier for Special Service vehicle, includes 8-speaker system)
- XM Radio, delete

EXTERIOR

- Wheels, 4 - 17" x 7" (43.2 cm x 17.8 cm) steel
- Tires, P265/70R17 all-season, blackwall
- Recovery hooks, front, frame-mounted (Standard on 4WD models. Available on 2WD models.)
- Wheel, 17" (43.2 cm) full-size, steel spare
- Tire carrier, lockable outside spare winch-type mounted under frame at rear
- Tire, spare P265/70R17 all-season blackwall
- Luggage rack side rails, roof-mounted, Black
- Fascia, front color-keyed
- Fascia, rear color-keyed
- Assist steps, Black
- Headlamps, dual halogen composite with automatic exterior lamp control and flash-to-pass feature
- Mirrors, outside heated power-adjustable, manual-folding (Mirror caps are Black.)
- Glass, Solar-Ray deep-tinted (all windows except light-tinted glass on windshield and driver- and front passenger-side glass)
- Wiper, rear intermittent with washer
- Door handles, Black
- Liftgate with liftglass rear door system with rear-window wiper/washer

Report content is based on current data version referenced. Any performance-related calculations are offered solely as guidelines. Actual unit performance will depend on your operating conditions.

GM AutoBook, Data Version: 170.3, Data updated 3/2/2011 1:52:00 PM

©Copyright 1986-2005 Chrome Systems Corporation. All rights reserved.

Customer File:

March 08, 2011 6:15:55 PM

Page 6

Prepared For:
City of Lavista
9900 Portal Rd
LaVista, NE 68128
Phone: (402) 331-8927
Fax: (402) 331-1051
Email: jkottmann@cityoflavista.org



Prepared By:
Ron Fullerton
Sid Dillon Chevrolet Buick
257 West A Street
Wahoo, NE 68066
Phone: (402) 540-7578
Fax: (402) 443-3982
Email: rfullerton@siddillon.com

2011 Fleet/Non-Retail Chevrolet Tahoe 4WD 4dr 1500 Commercial CK1070

STANDARD EQUIPMENT

STANDARD EQUIPMENT - 2011 Fleet/Non-Retail CK10706 4WD 4dr 1500 Commercial

INTERIOR

- Seats, front 40/20/40 split-bench, 3-passenger, driver and front passenger manual reclining, center fold-down armrest with storage, lockable storage compartments in seat cushion (includes auxiliary power outlet), adjustable outboard head restraints and storage pockets (With vinyl seats also includes (AM1) driver manual lumbar control. With vinyl seats requires (19V) Ebony vinyl and (BG9) Black rubberized-vinyl floor covering)
- Fleet Package
- Seat adjuster, driver 6-way power
- Seats, third row 50/50 split-bench, 3-passenger removable, all-belts-to-seat
- Headliner, cloth
- Floor covering, Black rubberized-vinyl
- Steering column, Tilt-Wheel, adjustable with brake/transmission shift interlock
- Steering wheel, vinyl
- Steering wheel controls, mounted cruise controls
- Instrumentation, analog with speedometer, odometer with trip odometer, fuel level, voltmeter, engine temperature, oil pressure and tachometer
- Instrumentation, analog with 120 mph speedometer, odometer with trip odometer, engine hour meter, fuel level, voltmeter, engine temperature, oil pressure and tachometer
- Warning tones headlamp on, key-in-ignition, driver and right-front passenger safety belt unfasten and turn signal on
- Windows, power with driver Express-Down and lockout features
- Door locks, power programmable with lockout protection (With (5W4) Identifier for Special Service vehicle, Auto Lockout is disabled on Driver door.)
- Remote vehicle starter prep package includes Remote Keyless Entry (Remote vehicle starter fob available as a GMC accessory.)
- Cruise control, electronic with set and resume speed
- Theft-deterrent system, vehicle, PASS-Key III
- Heater, rear auxiliary with rear passenger heating ducts

Report content is based on current data version referenced. Any performance-related calculations are offered solely as guidelines. Actual unit performance will depend on your operating conditions.

GM AutoBook, Data Version: 170.3, Data updated 3/2/2011 1:52:00 PM

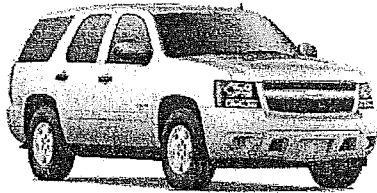
©Copyright 1986-2005 Chrome Systems Corporation. All rights reserved.

Customer File:

March 08, 2011 6:15:55 PM

Page 7

Prepared For:
City of Lavista
9900 Portal Rd
LaVista, NE 68128
Phone: (402) 331-8927
Fax: (402) 331-1051
Email: jkottmann@cityoflavista.org



Prepared By:
Ron Fullerton
Sid Dillon Chevrolet Buick
257 West A Street
Wahoo, NE 68066
Phone: (402) 540-7578
Fax: (402) 443-3982
Email: rfullerton@siddillon.com

2011 Fleet/Non-Retail Chevrolet Tahoe 4WD 4dr 1500 Commercial CK1070

STANDARD EQUIPMENT

STANDARD EQUIPMENT - 2011 Fleet/Non-Retail CK10706 4WD 4dr 1500 Commercial

- Air conditioning, tri-zone manual HVAC controls with individual climate settings for driver, right-front passenger and rear seat with rear controls located in floor console with front bucket seats and in the roof console with front bench seat (With 5W4, rear controls located in roof console)
- Air conditioning, rear auxiliary
- Defogger, rear-window electric
- Power outlets, 3 auxiliary, 12-volt includes 2 on the instrument panel and 1 in the cargo area
- Mirror, inside rearview manual day/night
- Visors, driver and front passenger illuminated vanity mirrors, padded with cloth trim, extends on rod
- Assist handles, front passenger and second row outboard
- Lighting, interior with dome light, driver- and passenger-side door switch with delayed entry feature, cargo lights, door handle or Remote Keyless Entry-activated illuminated entry and map lights in front and second seat positions (With (5W4) Identifier for Special Service vehicle, does not include driver- and passenger-side door switch with delayed entry feature.)

Report content is based on current data version referenced. Any performance-related calculations are offered solely as guidelines. Actual unit performance will depend on your operating conditions.

GM AutoBook, Data Version: 170.3, Data updated 3/2/2011 1:52:00 PM

©Copyright 1986-2005 Chrome Systems Corporation. All rights reserved.

Customer File:

March 08, 2011 6:15:55 PM

Page 8

Prepared For:
City of Lavista
9900 Portal Rd
LaVista, NE 68128
Phone: (402) 331-8927
Fax: (402) 331-1051
Email: jkottmann@cityoflavista.org



Prepared By:
Ron Fullerton
Sid Dillon Chevrolet Buick
257 West A Street
Wahoo, NE 68066
Phone: (402) 540-7578
Fax: (402) 443-3982
Email: rfullerton@siddillon.com

2011 Fleet/Non-Retail Chevrolet Tahoe 4WD 4dr 1500 Commercial CK1070

STANDARD EQUIPMENT

STANDARD EQUIPMENT - 2011 Fleet/Non-Retail CK10706 4WD 4dr 1500 Commercial

MECHANICAL

- Engine, Vortec 5.3L V8 SFI FlexFuel with Active Fuel Management, capable of running on unleaded or up to 85% ethanol (with gas - 320 hp [238.6 kW] @ 5400 rpm, 335 lb-ft of torque [452.2 N-m] @ 4000 rpm, with E85 ethanol - 326 hp [243.1 kW] @ 5300 rpm, 348 lb-ft of torque [469.8 N-m] @ 4400 rpm), iron block
- Transmission, 6-speed automatic, electronically controlled with overdrive and tow/haul mode
- Rear axle, 3.08 ratio (Not available with (K5L) Trailering Package.)
- Suspension Package, Premium Smooth Ride
- GVWR, 7300 lbs. (3311 kg) (Standard on 4WD models.)
- 4-wheel drive
- Cooling, external engine oil cooler, heavy-duty air-to-oil, integral to driver side of radiator (Included and only available with (K5L) Heavy-Duty Trailering Package.)
- Transfer case, active, single-speed, electronic Autotrac with rotary controls, does not include neutral. Cannot be dinghy towed. (Requires (GU4) 3.08 rear axle ratio. Not available on 2WD models or with (K5L) heavyduty trailering package.)
- Battery, heavy-duty 600 cold-cranking amps, maintenance-free with rundown protection and retained accessory power
- Alternator, 160 amps
- Trailering equipment includes trailering hitch platform, 7-wire harness with independent fused trailering circuits mated to a 7-way sealed connector and (VR4) 2" trailering receiver
- Suspension, front coil-over-shock with stabilizer bar
- Suspension, rear multi-link with coil springs
- Steering, power
- Brakes, 4-wheel antilock, 4-wheel disc, VAC power

PROCESSING-OTHER

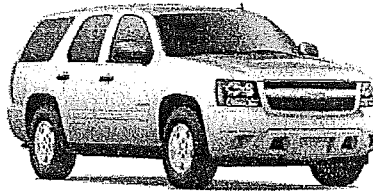
- Seats, second row 60/40 split-folding bench, 3-passenger with center armrest with 2 cup holders (Vinyl seats included and only available with (AZ3) front 40/20/40 vinyl split-bench seats, SEO (5T5) second and third row vinyl with front cloth seats or (9S1) seats, driver and passenger front, individual seats in vinyl trim.)

Report content is based on current data version referenced. Any performance-related calculations are offered solely as guidelines. Actual unit performance will depend on your operating conditions.

GM AutoBook, Data Version: 170.3, Data updated 3/2/2011 1:52:00 PM
©Copyright 1986-2005 Chrome Systems Corporation. All rights reserved.

Customer File:

Prepared For:
City of Lavista
9900 Portal Rd
LaVista, NE 68128
Phone: (402) 331-8927
Fax: (402) 331-1051
Email: jkottmann@cityoflavista.org



Prepared By:
Ron Fullerton
Sid Dillon Chevrolet Buick
257 West A Street
Wahoo, NE 68066
Phone: (402) 540-7578
Fax: (402) 443-3982
Email: rfullerton@siddillon.com

2011 Fleet/Non-Retail Chevrolet Tahoe 4WD 4dr 1500 Commercial CK1070

STANDARD EQUIPMENT

STANDARD EQUIPMENT - 2011 Fleet/Non-Retail CK10706 4WD 4dr 1500 Commercial

SAFETY

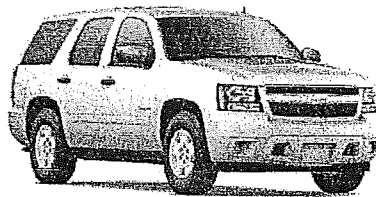
- StabiliTrak, stability control system with traction control
- Daytime Running Lamps with automatic exterior lamp control
- Air bags, dual-stage frontal, driver and right-front passenger with Passenger Sensing System (right-front passenger air bag status on overhead console) (Always use safety belts and the correct child restraints for your child's age and size. Even in vehicles equipped with air bags and the Passenger Sensing System, children are safer when properly secured in a rear seat in the appropriate infant, child or booster seat. Never place a rear-facing infant restraint in the front seat of any vehicle equipped with an active frontal air bag. See the Owner's Manual and child safety seat instructions for more safety information.)
- Air bags, head curtain side-impact, first and second row outboard seating positions with rollover sensor, includes third row seating positions with (AS3) passenger third row bench seat (Head curtain side air bags are designed to help reduce the risk of head and neck injuries to front and rear seat outboard occupants on the near side of certain side-impact collisions. Always use safety belts and the correct child restraints for your child's age and size, even in vehicles equipped with air bags. Children are safer when properly secured in a rear seat in the appropriate infant, child or booster seat. See the Owner's Manual and child safety seat instructions for more safety information.)
- Air bags, seat-mounted side-impact, driver and right-front passenger for thorax and pelvic protection (Always use safety belts and the correct child restraints for your child's age and size, even in vehicles equipped with air bags. Children are safer when properly secured in a rear seat in the appropriate infant, child or booster seat. See the Owner's Manual and child safety seat instructions for more safety information.)
- OnStar, 6 months of Directions and Connections plan includes Automatic Crash Response, Emergency Services, Crisis Assist, Stolen Vehicle Assistance including Stolen Vehicle Slowdown and Remote Ignition Block, Remote Door Unlock, Turn-by-Turn Navigation with Destination Download (requires navigation radio) and OnStar eNav (where available), OnStar Vehicle Diagnostics, Roadside Assistance, Remote Horn and Lights, and Hands Free Calling. (Visit onstar.com for details and system limitations.)
- Automatic Crash Response (Deleted when (UE0) OnStar delete is ordered.)
- Stolen Vehicle Assistance (Deleted when (UE0) OnStar delete is ordered.)
- OnStar Turn-by-Turn Navigation (Deleted when (UE0) OnStar delete is ordered.)
- Safety belts, 3-point, driver and right-front passenger
- LATCH system (Lower Anchors and Top tethers for Children) for child safety seats
- Tire Pressure Monitoring System air pressure sensors in each tire with pressure display in Driver Information Center (does not apply to spare tire)

Report content is based on current data version referenced. Any performance-related calculations are offered solely as guidelines. Actual unit performance will depend on your operating conditions.

GM AutoBook, Data Version: 170.3, Data updated 3/2/2011 1:52:00 PM
©Copyright 1986-2005 Chrome Systems Corporation. All rights reserved.

Customer File:

Prepared For:
City of Lavista
9900 Portal Rd
LaVista, NE 68128
Phone: (402) 331-8927
Fax: (402) 331-1051
Email: jkottmann@cityoflavista.org



Prepared By:
Ron Fullerton
Sid Dillon Chevrolet Buick
257 West A Street
Wahoo, NE 68066
Phone: (402) 540-7578
Fax: (402) 443-3982
Email: rfullerton@siddillon.com

2011 Fleet/Non-Retail Chevrolet Tahoe 4WD 4dr 1500 Commercial CK1070

STANDARD EQUIPMENT

STANDARD EQUIPMENT - 2011 Fleet/Non-Retail CK10706 4WD 4dr 1500 Commercial

Report content is based on current data version referenced. Any performance-related calculations are offered solely as guidelines. Actual unit performance will depend on your operating conditions.

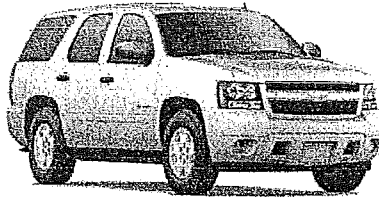
GM AutoBook, Data Version: 170.3, Data updated 3/2/2011 1:52:00 PM
©Copyright 1986-2005 Chrome Systems Corporation. All rights reserved.

Customer File:

March 08, 2011 6:15:55 PM

Page 11

Prepared For:
City of Lavista
9900 Portal Rd
LaVista, NE 68128
Phone: (402) 331-8927
Fax: (402) 331-1051
Email: jkottmann@cityoflavista.org



Prepared By:
Ron Fullerton
Sid Dillon Chevrolet Buick
257 West A Street
Wahoo, NE 68066
Phone: (402) 540-7578
Fax: (402) 443-3982
Email: rfullerton@siddillon.com

2011 Fleet/Non-Retail Chevrolet Tahoe 4WD 4dr 1500 Commercial CK1070

WARRANTY INFORMATION

WARRANTY INFORMATION - 2011 Fleet/Non-Retail CK10706 4WD 4dr 1500 Commercial

WARRANTY

Basic:

3 Years/36,000 Miles

Drivetrain:

5 Years/100,000 Miles

Corrosion:

3 Years/36,000 Miles

Rust-Through

6 Years/100,000 Miles

Emissions:

Gas Engine

2 Years/24,000 Miles

Short Term California

3 Years/50,000 Miles

Roadside Assistance:

5 Years/100,000 Miles

Report content is based on current data version referenced. Any performance-related calculations are offered solely as guidelines. Actual unit performance will depend on your operating conditions.

GM AutoBook, Data Version: 170.3, Data updated 3/2/2011 1:52:00 PM

©Copyright 1986-2005 Chrome Systems Corporation. All rights reserved.

Customer File:

March 08, 2011 6:15:55 PM

Page 12